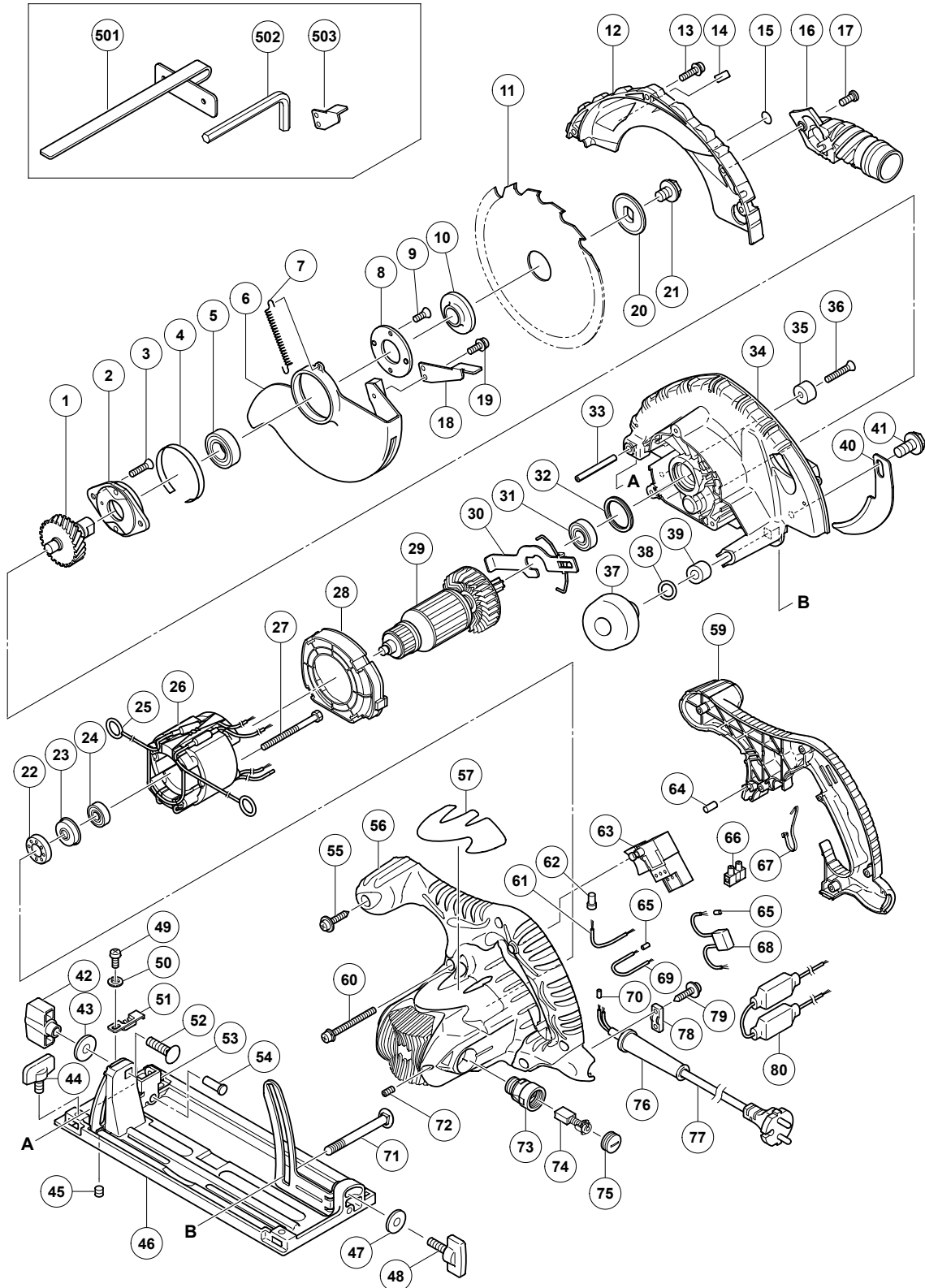


ELECTRIC TOOL PARTS LIST

CIRCULAR SAW
Model C 6BU2

2005 · 8 · 30
(E1)



PARTS

C 6BU2

ITEM NO.	CODE NO.	DESCRIPTION	NO. USED	REMARKS
1	302-449	SPINDLE AND GEAR SET	1	
2	302-433	BEARING HOLDER	1	
3	992-013	SEAL LOCK FLAT HD. SCREW M5X14	2	
4	961-807	BUSHING	1	
5	600-3VV	BALL BEARING 6003VVCMP2L	1	
6	324-677	SAFETY COVER	1	
7	302-463	RETURN SPRING	1	
8	302-435	BEARING COVER	1	
9	990-430	SEAL LOCK FLAT HD. SCREW M4X10	2	
10	302-476	WASHER (A)	1	
11	324-678	TCT SAW BLADE 165MM-D30 HOLE-NT16	1	
12	324-674	SAW COVER	1	
13	305-691	MACHINE SCREW (W/WASHERS) M4X14 (BLACK)	4	
14		MODEL MANE PLATE	1	
15		NAME PLATE (BRAKE)	1	
16	324-669	DUST COLLECTOR	1	
17	324-139	SPECIAL BOLT	1	
18	302-464	KNOB	1	
19	304-043	MACHINE SCREW (W/WASHERS) M4X10 (BLACK)	1	
20	302-423	WASHER (B)	1	
21	324-662	HEX. SOCKET HD. BOLT M8X15.5	1	
22	325-060	RUBBER BUSHING	1	
23	322-089	BEARING BUSHING	1	
24	608-VVM	BALL BEARING 608VVC2PS2L	1	
25	930-703	BRUSH TERMINAL	2	
26	340-424G	STATOR ASS'Y 230V	1	INCLUD. 25
27	953-121	HEX. HD. TAPPING SCREW D5X50	2	
28	324-675	FAN GUIDE	1	
29	360-728E	ARMATURE 230V	1	
30	324-655	LOCK LEVER	1	
31	600-1VV	BALL BEARING 6001VVCMP2L	1	
32	958-130	RUBBER RING	1	
33	949-686	ROLL PIN D6X40 (10 PCS.)	1	
34	324-673	GEAR COVER ASS'Y	1	INCLUD. 32, 35, 36
35	961-729	CUSHION	1	
36	949-794	FLAT HD. SCREW M6X20 (10 PCS.)	1	
37	324-660	KNOB	1	
38	676-531	O-RING (P-7)	1	
39	303-801	SLEEVE	1	
40	303-838	RIVING KNIFE	1	
41	324-664	HEX. SOCKET HD. BOLT M8X10	1	
42	324-658	WING NUT M8	1	
43	949-433	BOLT WASHER M8 (10 PCS.)	1	
44	301-806	WING BOLT M6X15	1	
45	302-469	SLOTTED HD. SET SCREW (SEAL LOCK) M6X6	1	
46	324-679	BASE ASS'Y (FLUORINE)	1	INCLUD. 42, 43, 47-54
47	949-425	WASHER M6 (10 PCS.)	1	
48	302-459	WING BOLT M6X17	1	
49	949-214	MACHINE SCREW M4X6 (10 PCS.)	1	
50	949-453	SPRING WASHER M4 (10 PCS.)	1	
51	324-659	GUIDE PIECE	1	

